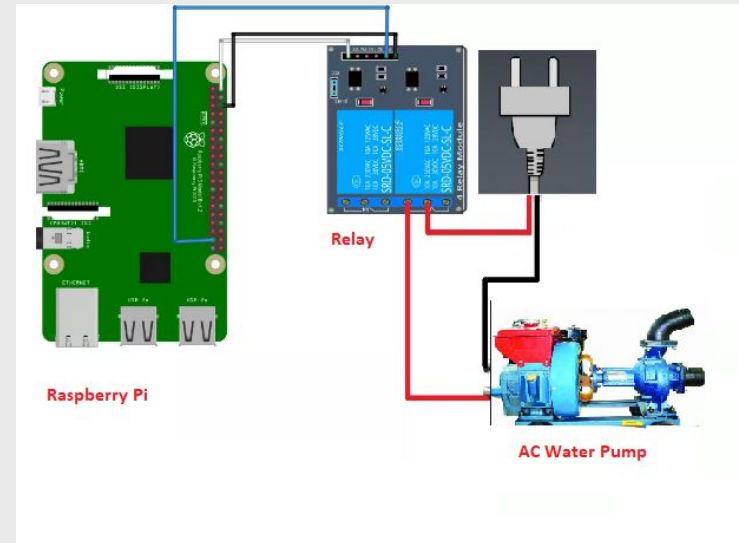
The background features two large, overlapping, horizontal brushstrokes. The top stroke is a vibrant pink, and the bottom stroke is a warm orange. Both strokes have a textured, painterly appearance with visible brush marks and irregular edges. The text is centered over the intersection of these two strokes.

Prototype Schedule

Prototype #1

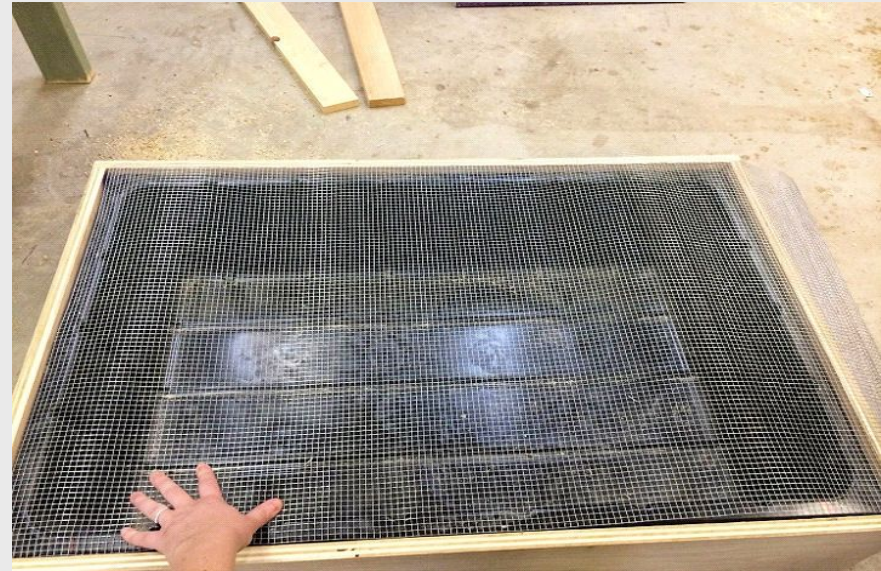
For my first prototype, I plan to take a water pump and connect it to my raspberry pi/breadboard and demonstrate simple on/off actions. I also may tinker with the different water pressures depending on the capabilities of the water pump(s) I have access to.



Prototype #2

For my second prototype, I would like to have the water storage area at the bottom of my frame completed and have the hose/pipeline hooked up to demonstrate how the water comes out of the pipeline.

Image found on: <https://ibuildit.ca/projects/diy-waterfall/>



Prototype #3



For my last prototype, I would like to share a storyboard of the film I plan to project onto my water screen.

?’s I Hope To Answer:

- 1. Is the water engaging? Does it seem essential to the story?**
- 2. What kind of details can be added to the structure of the water screen, around the room, or in the film to help tell a stronger story?**
- 3. Would this type of installation cause you to want to donate to the cause?**